

MAP21C

Technical Support Bulletin

Map21C Users Manual

Last update 11-11-2010

Abstract: Map21C current loop, shipped after 11-1-2010 is made by adding an off the shelf serial to current loop device H05-369 to the Map21S. This document shows how to connect the current loop circuit to the H05-369 that is shipped with the printer to a current loop circuit.

Refer to the map21S users manual for operation of the device available at this link.

<http://adsi-usa.com/techsupport/recorder/map21smanual.pdf>

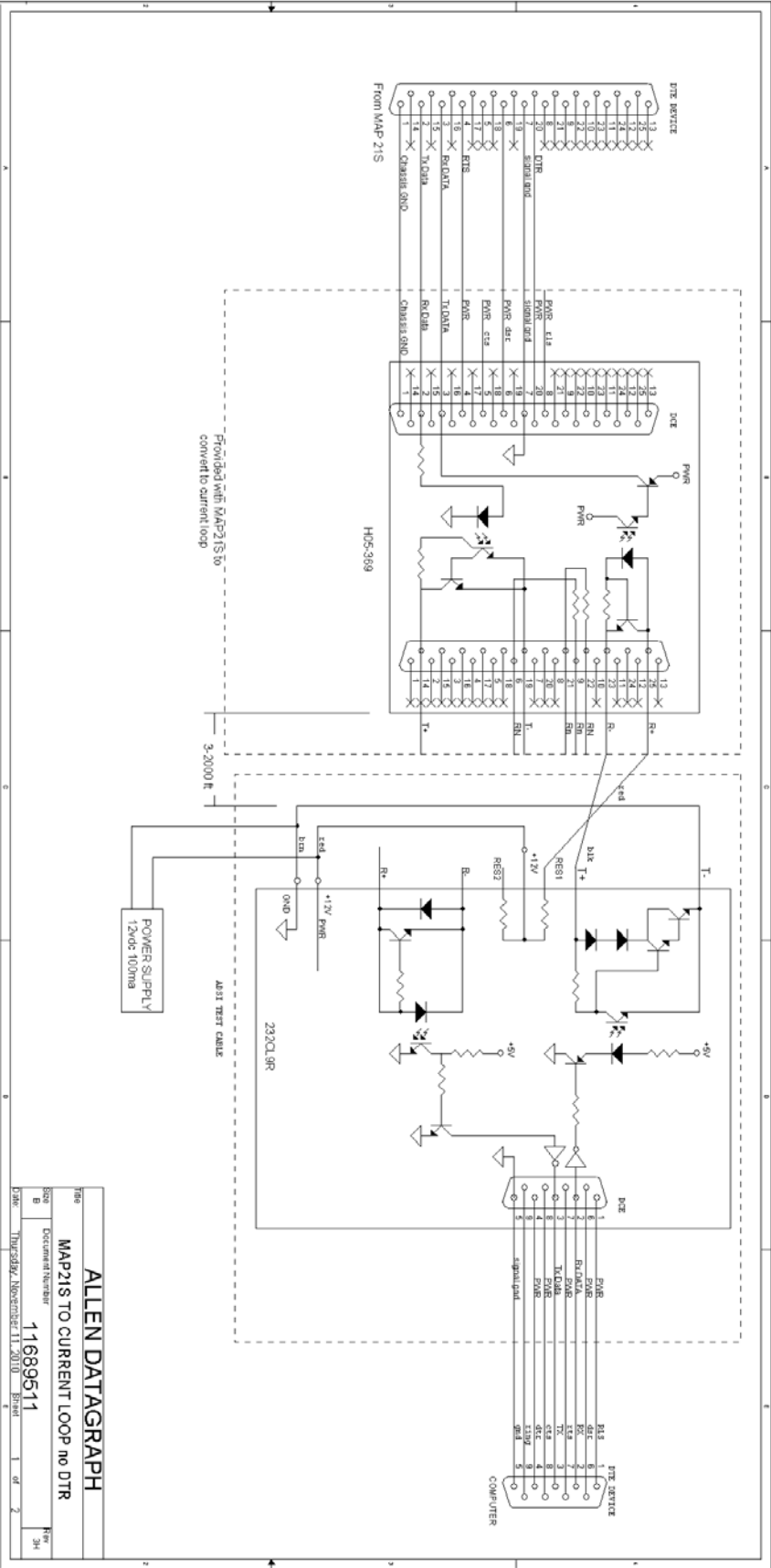
Note: Our previous version of the map21C had the current loop pins on different pins than the off the shelf serial to current loop device we are providing with the map21C. If you have a cable built for our older model it will have to be modified.

There are two cable schematics shown on the following two pages. One is a single directional interface with no DTR signal sent back to the sending computer. If you use this schematic you can send data to the printer but you can't tell when the printer is ready to accept data. If you send data to the printer when there is no room in the fifo, the data will not be printed. In order to use this configuration you have to have a 12V power supply and build one cable to send the current loop signal.

The 2nd schematic uses the transmit channel to send the DTR signal from the map21s to the transmit pin of the H05-369. The signal is then sent to the 232c19r that we use to test the current loop option of the map21c. This dtr signal can then be wired to the CTS signal on the computer so it can handshake with the computer telling it when there is room in the 1600 byte fifo for printing. In order to use this configuration you will have to have a power supply and build 3 cables that are not available off the shelf.

If you want to use the map21c as a serial device you can purchase the optional PL-00-09-126-9 null modem handshake cable that supports serial handshaking. This cable can be normally be extended with off the shelf serial cable extensions to about 200' total length between computer and printer. In this configuration you do not need the H05-369 current loop adapter.





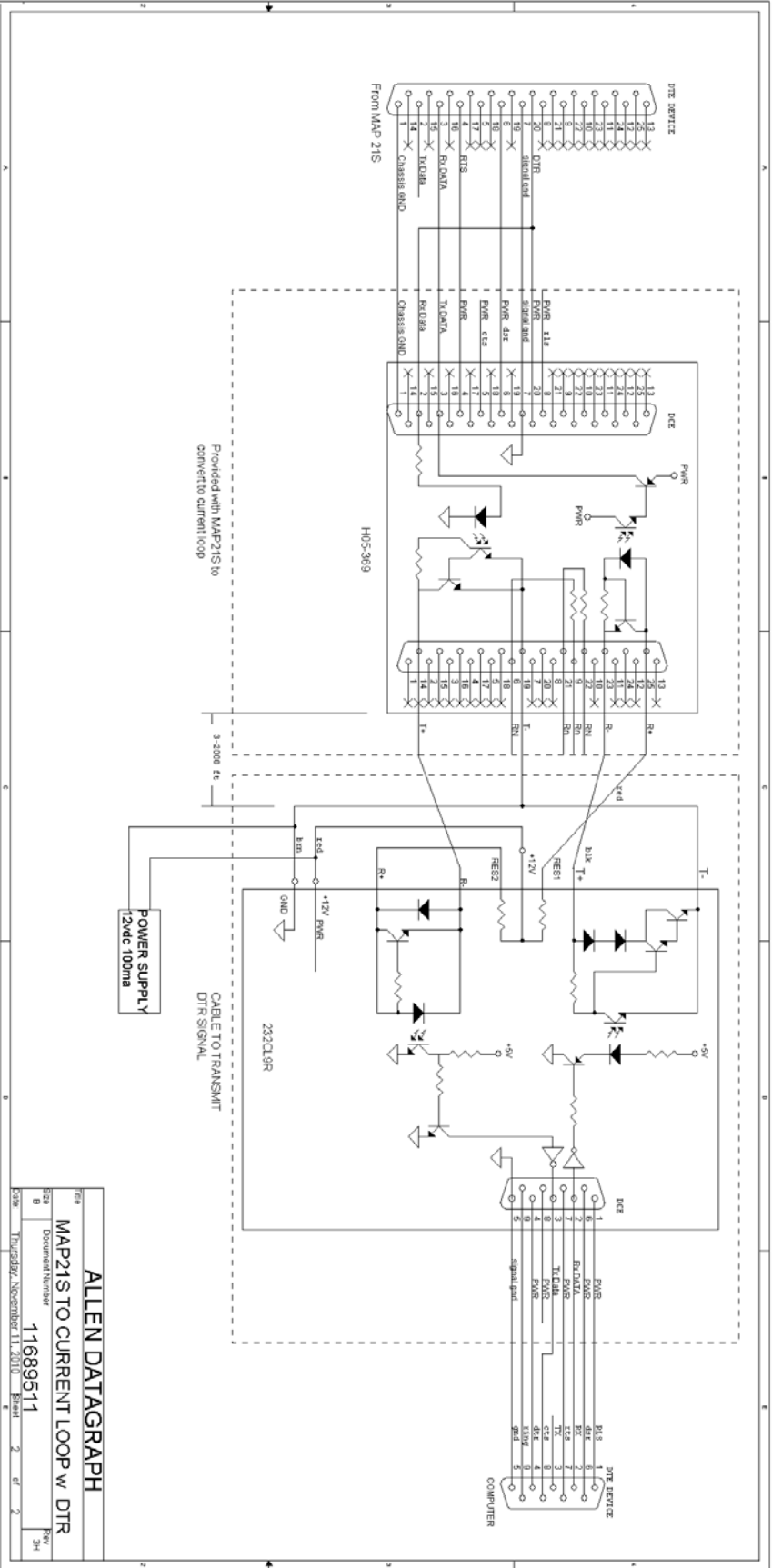
ALLEN DATAGRAPH

MAP21S TO CURRENT LOOP no DTR

Document Number: 11689611

11689611

Thursday, November 11, 2010 8:00 AM



ALLEN DATAGRAPH

MAP21S TO CURRENT LOOP w DTR

Document Number: 11689511

Revision: 2 of 2

Date: Thursday, September 11, 2008

Author: [Name]

Part: 3H