

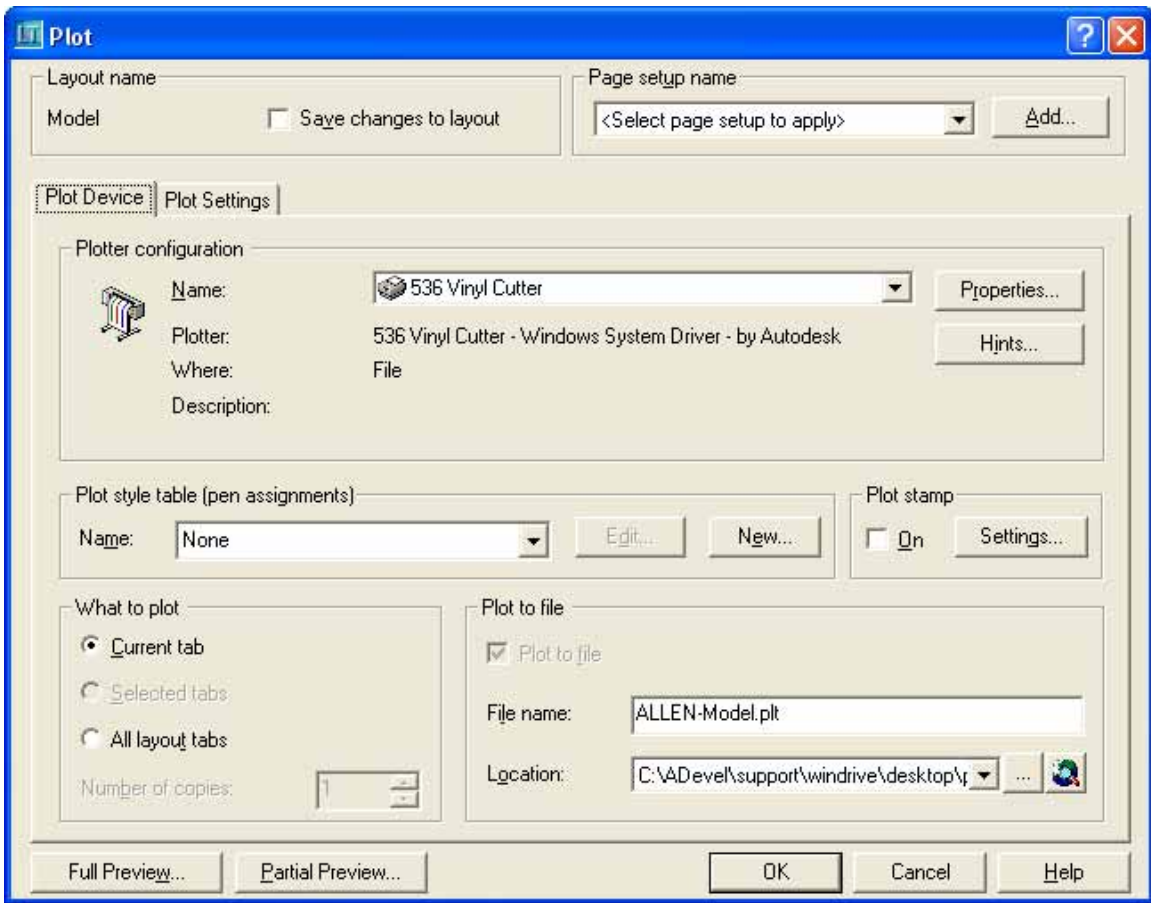
ALLEN DATAGRAPH

Technical Support Bulletin: Using AutoCAD with Allen Printer Driver

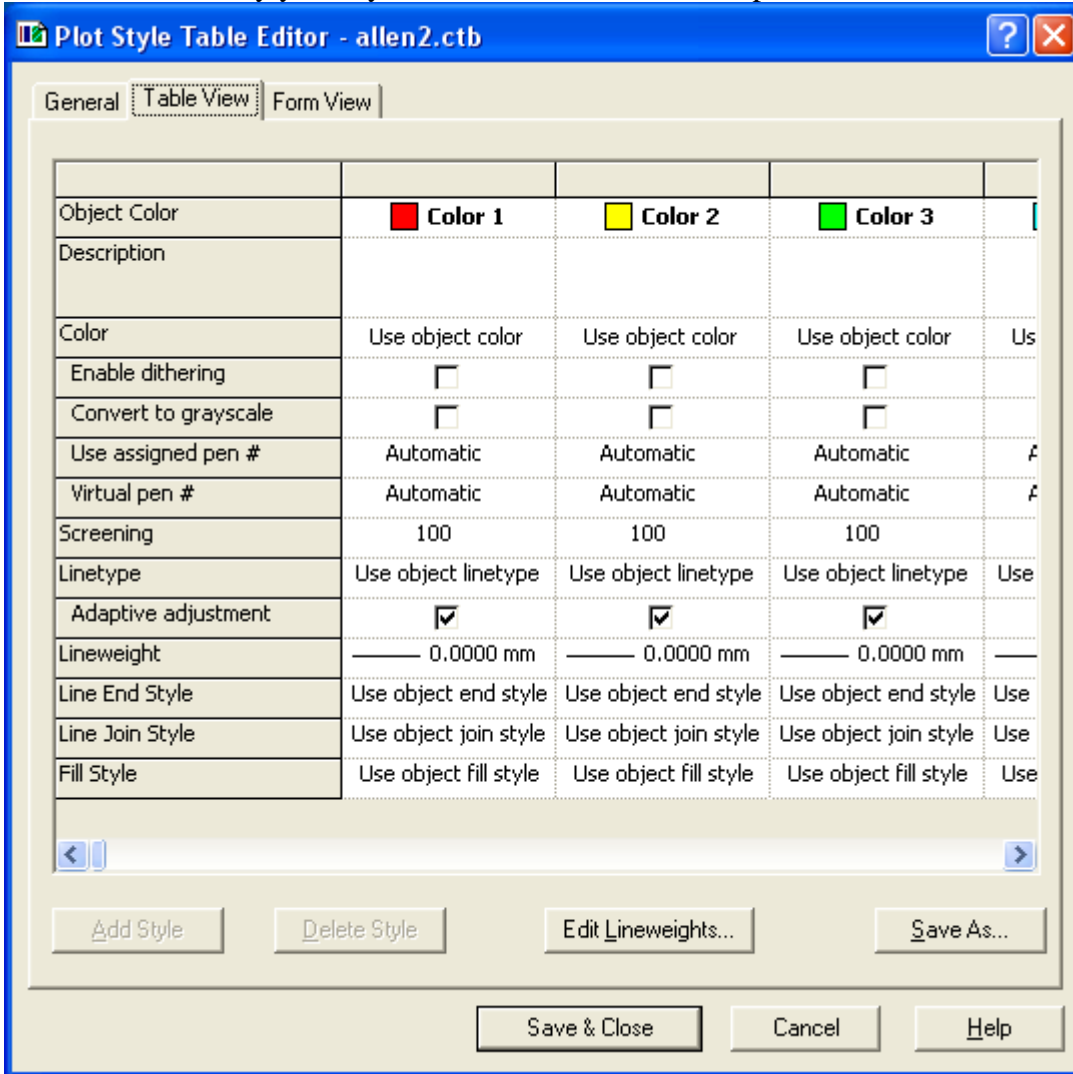
December 18, 2002

AutoCAD defaults to pen widths greater than 1 pixel wide. This causes the GDI (Graphic Display Interface) in Windows to send a graphic image to the printer driver instead of cosmetic lines. In order to use the Allen printer driver you must set the plotted pen width to 0. For AutoCAD Lite 2002 uncheck the plot with plot styles and Plot object lineweights.





You can also modify your style table to have a zero width pen.



If your cutter has firmware revision 2.13 or less you must disable the Polyline Encoded HPGL command.

To disable the PE HPGL command

Click Start, [Settings], Control Panel, Printers and Faxes

Right Click on the Allen Datagraph Cutter driver and select properties

Select the Device Settings Page

Select the down arrow next to Output Polyline Encoded and select Off.

Click on OK