

Metric vs. US

Technical Support Bulletin

Units of Measure

Last Update October 18, 2007

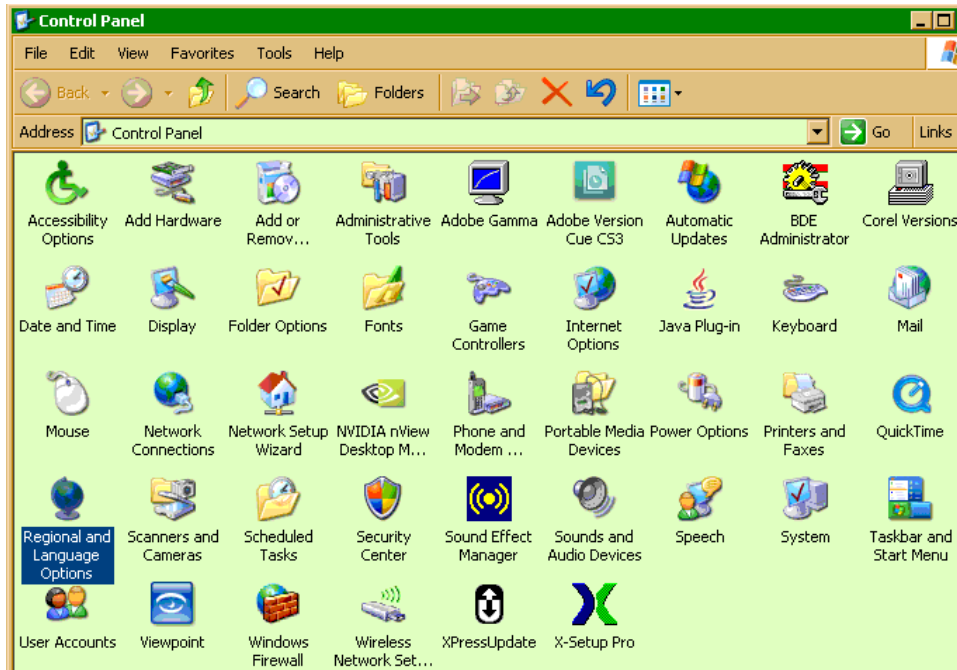
Abstract: This TSB is written to help international users to change between US units of measure and metric units of measure.

Windows XP instructions for units of measure change

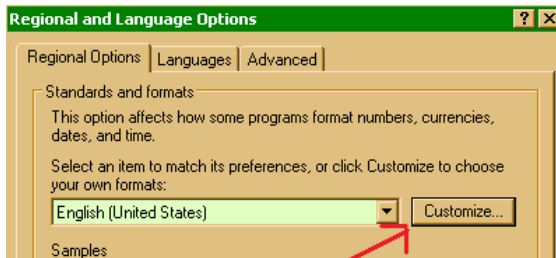
Start the control panel



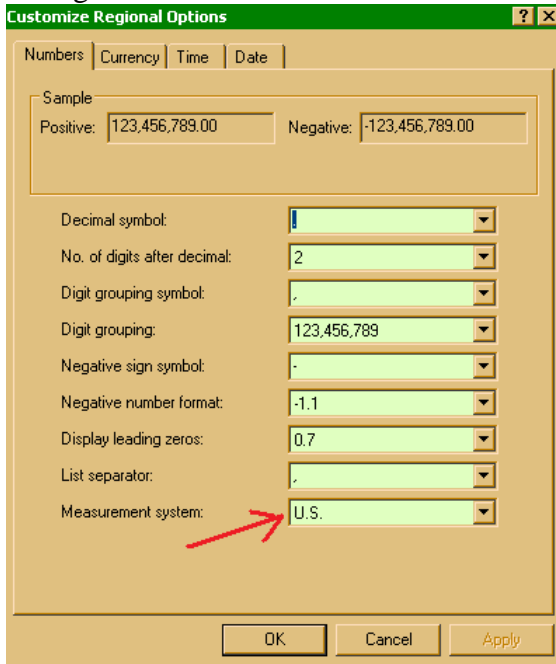
Select regional and Language options



Press Customize



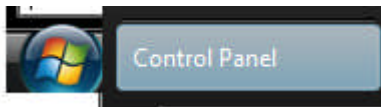
Change units of measure



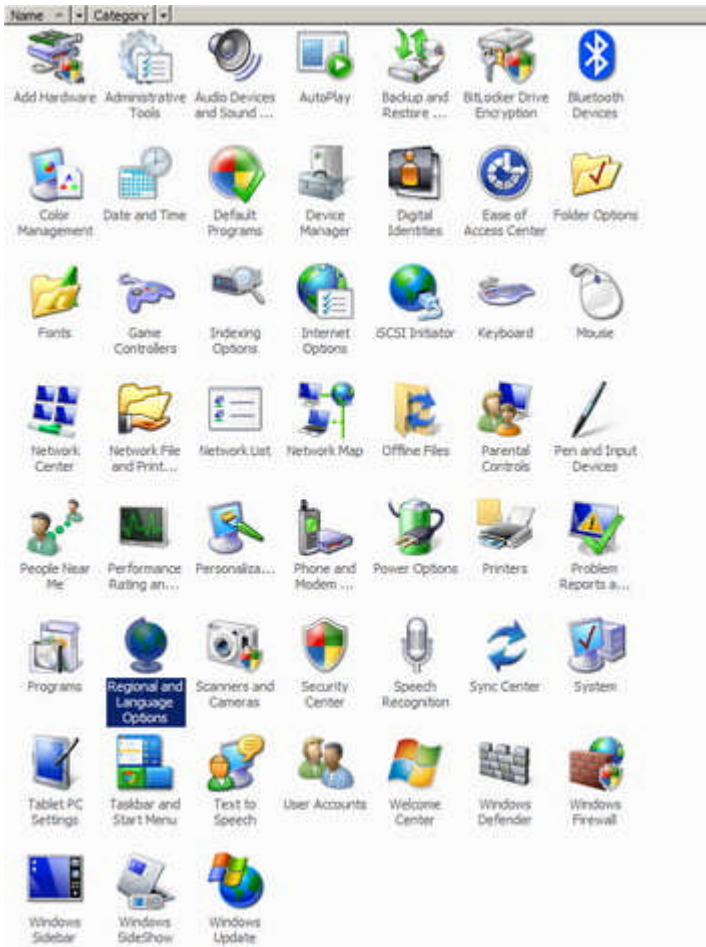
Select desired measurement system

Windows Vista instructions for units of measure change

Start Control Panel



Select Regional and Language Options

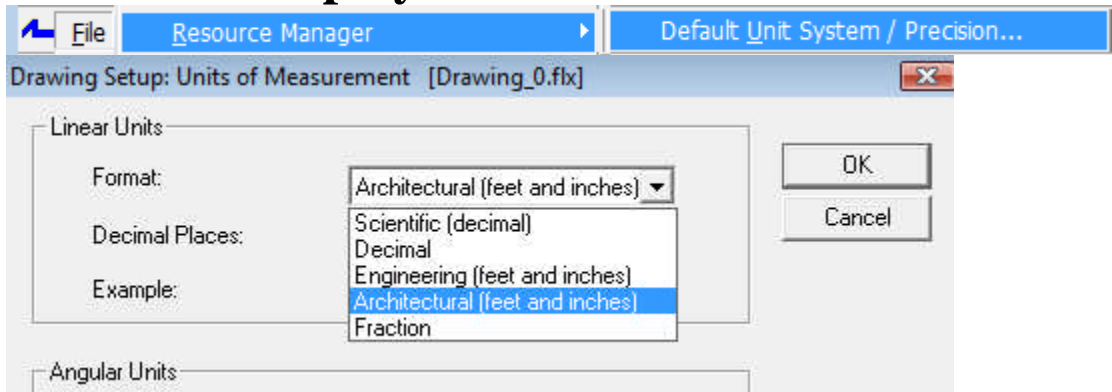


Select Customize this format and change measurement systems

The screenshot shows the 'Regional and Language Options' dialog box. The 'Formats' tab is selected, and the 'Current format' is set to 'English (United States)'. Below this, examples of data display are shown: Number: 123,456,789.00; Currency: \$123,456,789.00; Time: 6:38:48 PM; Short date: 10/18/2007; Long date: Thursday, October 18, 2007. A red arrow points to the 'Customize this format...' button.

The 'Customize Regional Options' dialog box is open, showing the 'Numbers' tab. The 'Example' section shows 'Positive: 123,456,789.00' and 'Negative: -123,456,789.00'. The 'Measurement system' is set to 'U.S.', and the 'Standard digits' are set to '0123456789'. A red arrow points to the 'Measurement system' dropdown.

AllenCAD display units



AllenCAD changing units of drawing for tiling.

Allen tile accepts drawings in either mm or inches as the units of measure. You just click on the document conversion options as to the measurement system units you have drawn your countertop.

Open a drawing with AllenCAD.

Select Tile Icon 

Select the counter top

Right click to finish selection

Uncheck or check the Drawing is in inches or Drawing in is mm so that the correct message is displayed.

If your drawing is in mm, check this box,
If your drawing is in inches, uncheck this box.

