

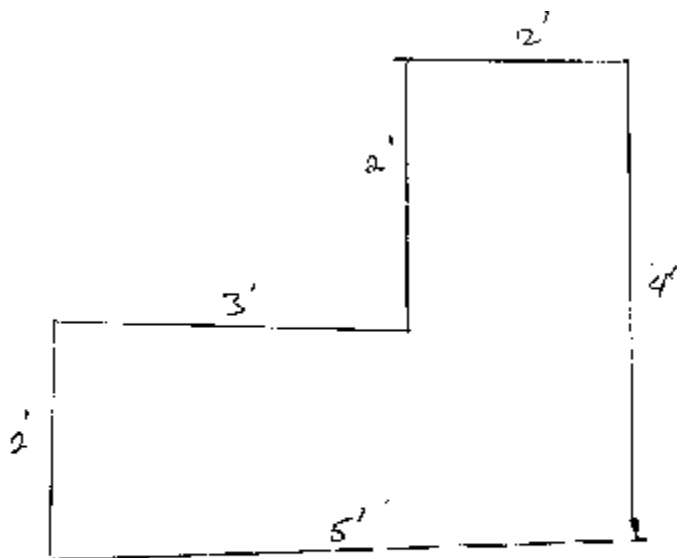


Technical Support Bulletin: Entering a Hand Drawing Countertop

Last Updated September 15, 2014

Abstract: This TSB shows a step-by-step procedure to enter a hand drawn countertop into AllenCAD. Tile the countertop and send it to the cutter.

Here is a hand drawn countertop to use in this example:

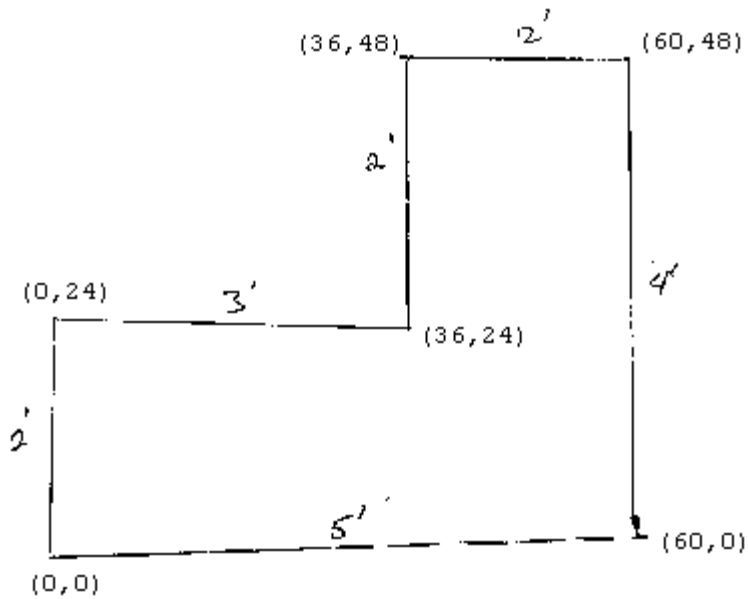


Hand Drawn
Countertop
Template
Scale 1" = 1'

First convert all distances to inches.

Next pick a corner for the origin.

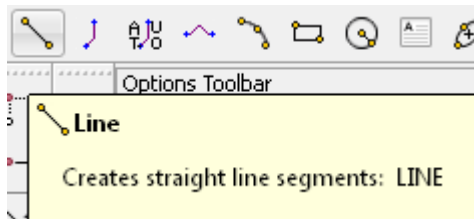
Then convert the end points to coordinates on an x/y grid.



Hand Drawn
Counter Top
Template
Scale 1" = 1'

Start AllenCad and pick a new page, choose feet and inches and click on OK. Click on options -> settings. On the Object Snap page click on the Off button to remove all object snap check boxes below. On the Snap/Grid page, uncheck Orthogonal Mode Active. Click on OK.

Click on the Line icon on the draw toolbar.



Now, type in the coordinates from the 2nd drawing following the end points in a counterclockwise direction. You are prompted for each end point as you type them. After each coordinate pair press the enter key on the keyboard. The command history window will look like below when you are complete.

```
: _LINE
```

```
Options: Segments or
```

```
Specify start point> 0,0
```

```
Options: Segments, Undo, Enter to exit or
```

```
Specify next point> 60,0
```

```
Options: Segments, Undo, Enter to exit or
```

```
Specify next point> 60,48
```

Options: Segments, Undo, Close, Enter to exit or
Specify next point» 36,48


Options: Segments, Undo, Close, Enter to exit or
Specify next point» 36,24

Options: Segments, Undo, Close, Enter to exit or
Specify next point» 0,24

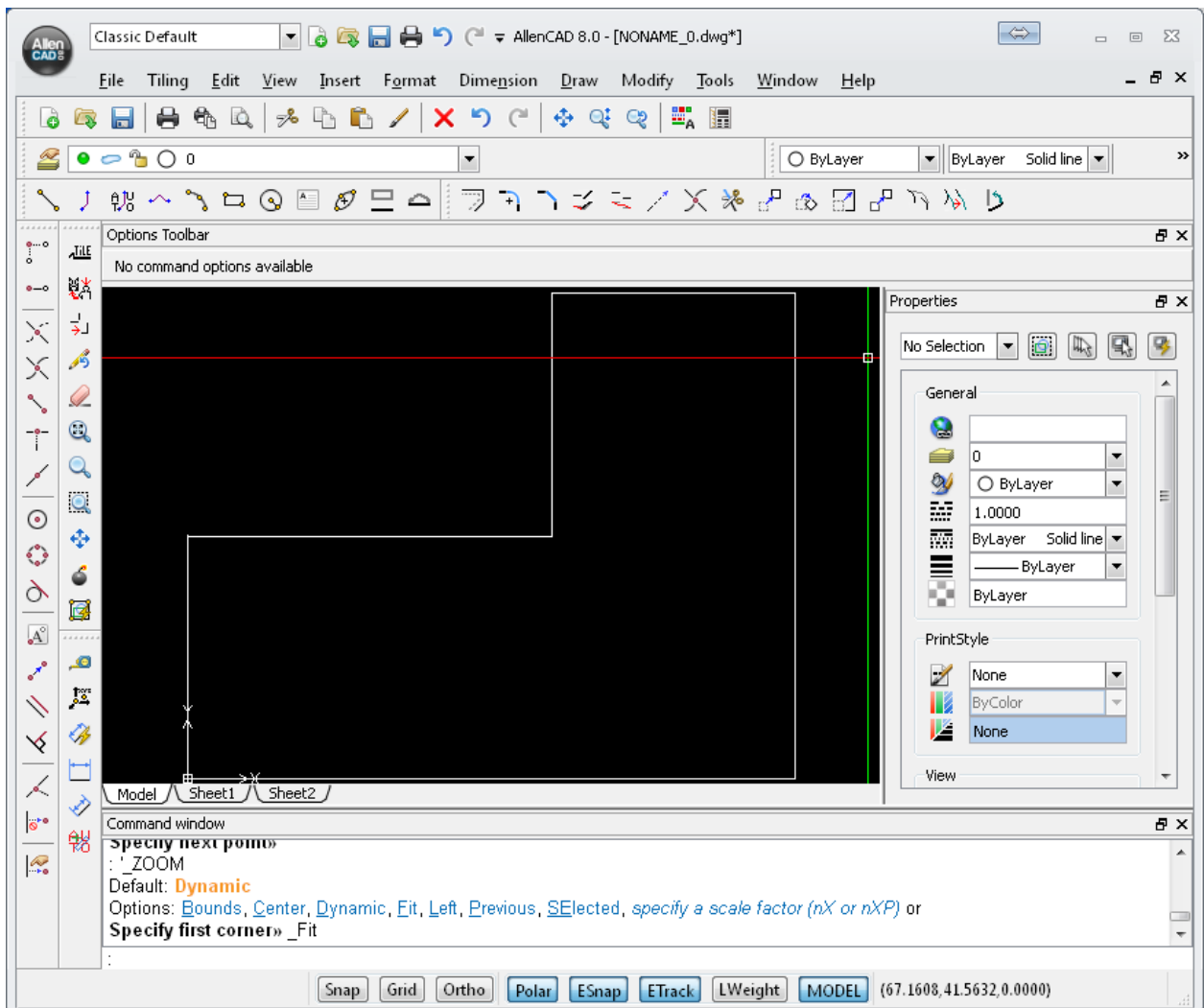
Point or option keyword required.


Specify next point» 0,0

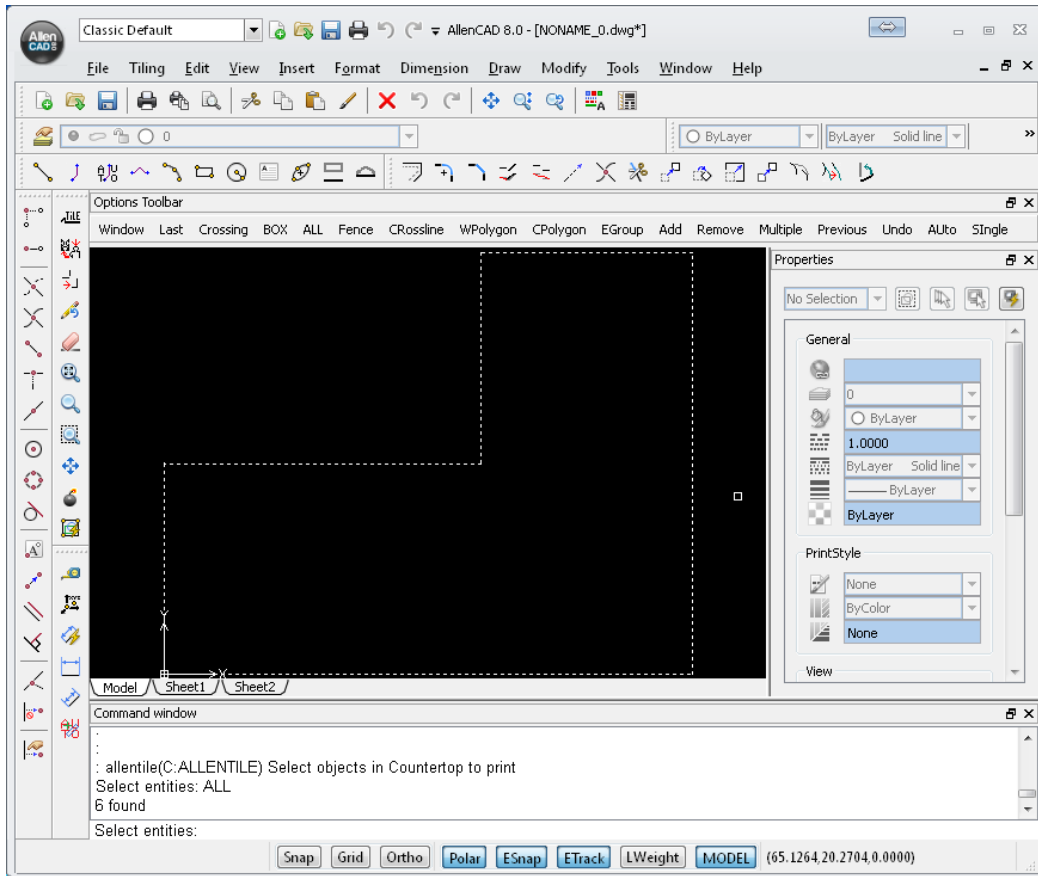
Options: Segments, Undo, Close, Enter to exit or
Specify next point»

To display the whole image click on the zoom to drawing extents icon  on the zoom toolbar.

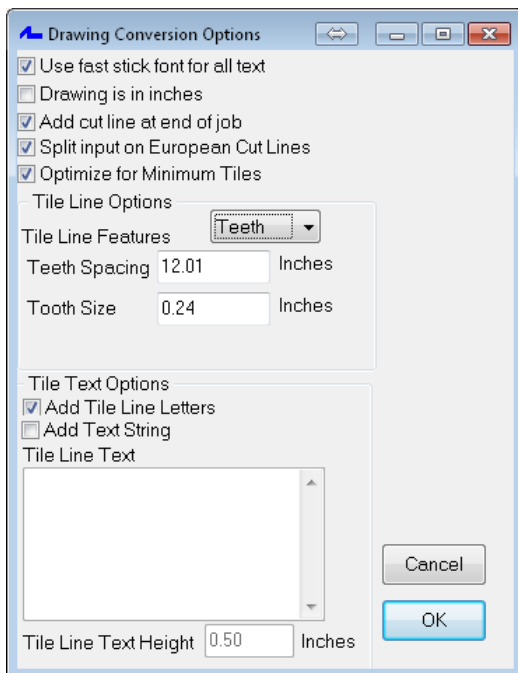
Your screen should now look like this:



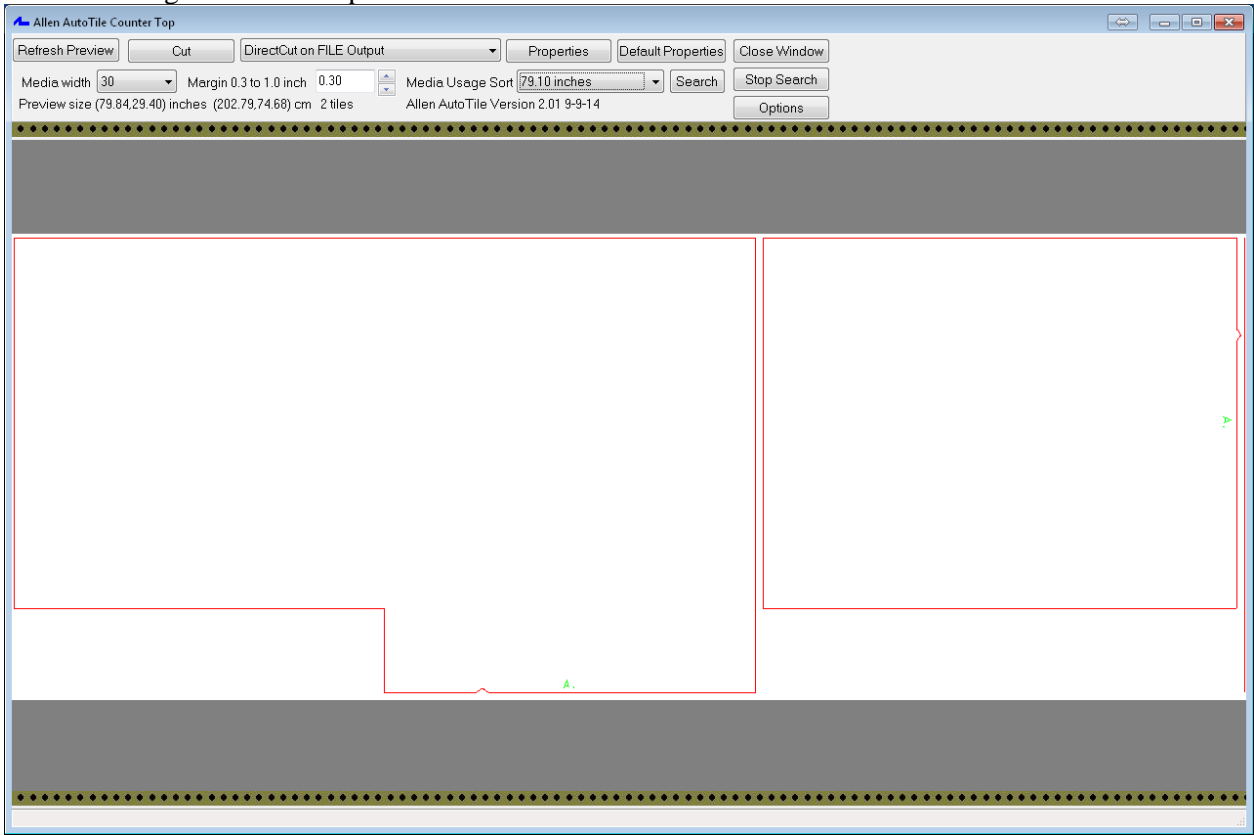
This drawing will not fit on our i30 template maker without tiling so we can use the tile tool to split the drawing. Click on the  icon then select All from the options tool bar



Press enter



Select drawing conversions options desired and click on OK



Click on cut to send the drawing to the cutter.