

USB Driver

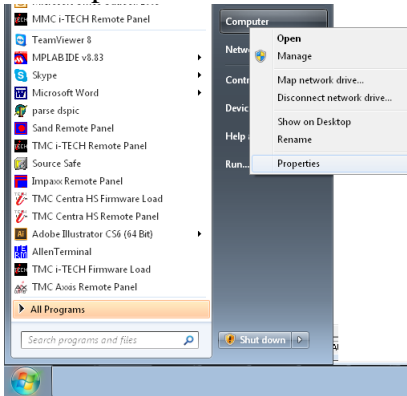
Technical Support Bulletin

Windows 7,8 Wrong Driver Installed

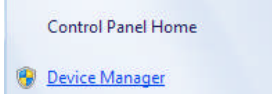
Last update 4-29-13

Abstract: The wrong usb driver sometimes gets installed causing no communication from computer to cutter.

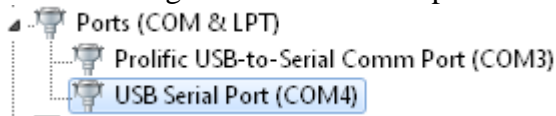
To fix problem install cutter driver 2.14e or later.



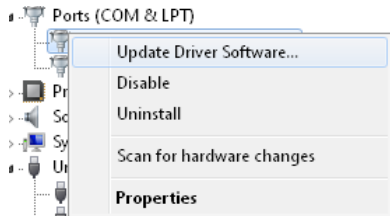
Left click on start, right click on computer and select properties.



select device manager, select ports com and lpt
if device manager shows usb serial port the wrong driver is installed.

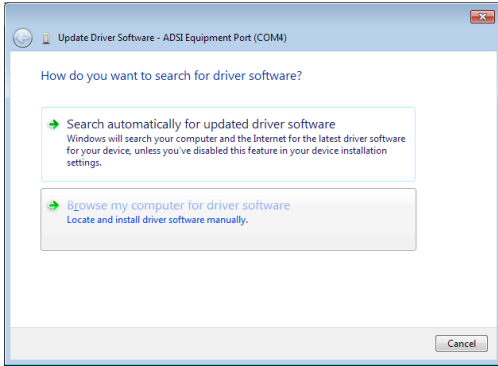


To fix

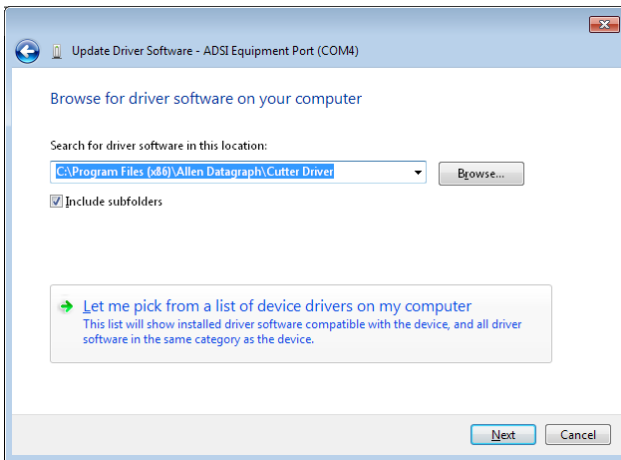


Right click and select properties

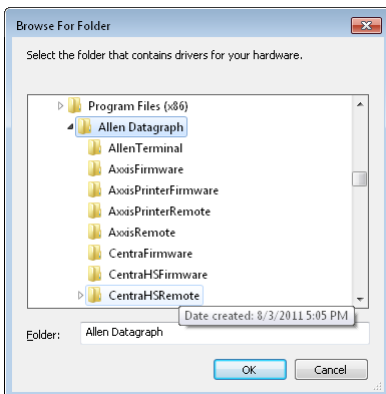




Select Browse my computer for driver software



Select browse button and navigate to C:\Program Files (x86)\Allen Datagraph\Cutter Driver



Then click on OK and Next

Correct driver will be installed indicating ADSI Equipment Port.

